



RESIDENT RIGHTS

You have the right to be informed in writing of the rates charged by the facility as well as any additional charges, and to receive thirty-days notice in writing of any change in your health reported to your sponsor.

In memoriam

We extend our deepest sympathy to the family and friends of our residents who recently passed away.



Joan Smith

Paul Brickner

JOIN THE SISTERS OF
ST. FRANCIS LEADERSHIP TEAM

CHRISTMAS OPEN HOUSE

AT ST. FRANCIS CONVENT

2:00 - 4:00 PM

MONDAY **16** DECEMBER

FELLOWSHIP
HOLIDAY CHEER
REFRESHMENTS
MUSIC



* Journey from
Nazareth to
Bethlehem
and rediscover
the wonder of
Christmas!



SUNDAY, DECEMBER 1, 2024
St. Francis Campus
200 St. Francis Ave., Tiffin

DRIVE THRU: 4:15-5:15 P.M. **WALK THRU: 6:30-8:00 P.M.**



**DONATIONS OF NEW HATS, SCARVES, GLOVES
AND SOCKS WILL BE COLLECTED AND
DISTRIBUTED TO THOSE IN NEED
THROUGHOUT THE AREA**



WEAR COMFORTABLE SHOES
AND WARM CLOTHES. PLEASE
PARK BEHIND ST. FRANCIS
HOME TO MEET YOUR GUIDE



Merry Christmas & HAPPY NEW YEAR



THERAPY PROGRAMS

Maximizing strength, independence & quality of life

St. Francis Senior Ministries, in partnership with HealthPRO Heritage, offers on-site rehabilitation services:

- Physical Therapy
- Occupational Therapy
- Speech Therapy

Specialized programs are available to promote independence and regain skills:

- Fall Prevention
- Balance
- Mobility
- Training in Self-Care & Home Activities
- Pain Management
- Home Safety
- Post-Operative Care
- Caregiver Training
- Home Safety Assessment
- Adaptive Equipment Training
- Voice and Speech Impairments
- Swallowing Difficulty
- Word-Finding Deficits
- Incontinence Management
- Arthritis Management

Additional Details:

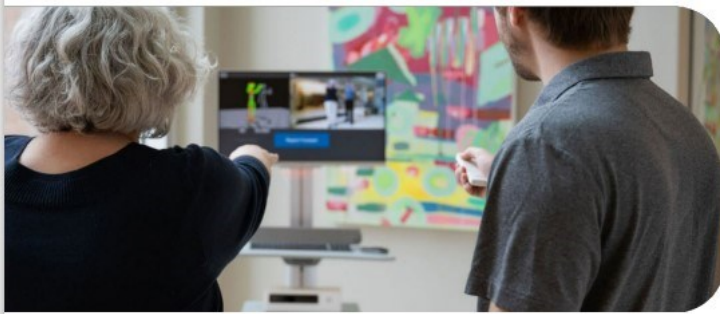
- Therapy participation requires a physician prescription
- Services are typically covered under Medicare Part B or Managed Part B benefit

For more information or to schedule an appointment or a complimentary consultation, please call 419-447-2723 Ext 3275.



HEALTHPRO  HERITAGE

182 St Francis Ave • Tiffin, OH 44883



FIND OUT YOUR FALL RISK! FREE VIRTUSENSE SCREENING EVENT

Every 4th Wednesday | 11:00AM-12:00PM

Please join us for a balance screening event hosted by HealthPRO Heritage. Utilizing artificial intelligence, VirtuSense analyzes your gait to calculate your exact risk of falls. Come find out your fall risk for **free** + find out just how VirtuSense technology is changing the healthcare industry!

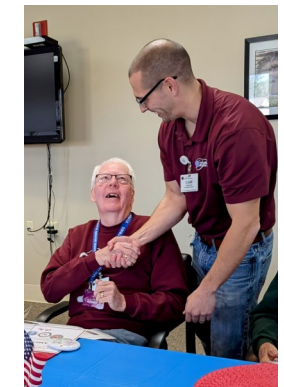
For more information, please call:

Phone Number

419-447-2723 ext. 3275

St. Francis
Therapy Department
182 St. Francis Ave.
Tiffin, OH 44883

Veterans Day 2024



HAPPY BIRTHDAY RESIDENTS OF ST. FRANCIS SENIOR MINISTRIES

December

- 06 - Norina Martin (*Villas*)
- 08 - Mary Eichhorn (*Villas/St. Francis Home*)
- 10 - Sr Rosann Morman (*Elizabeth Schaefer Apts.*)
- 11 - Mary Cunningham (*St. Francis Home*)
- 11 - Dan Johnson (*Villas*)
- 12 - Mary Schroth (*Villas*)
- 12 - Eileen Hosang (*Villas*)
- 13 - Jim Alberts (*Villas*)
- 13 - Pat Kimmert (*Elizabeth Schaefer Apts.*)
- 14 - Hattie McDonald (*Elizabeth Schaefer Apts.*)
- 15 - Georgia Black (*Friedman Assisted Living*)
- 20 - Catherine Tiell (*Elizabeth Schaefer Apts.*)
- 20 - Sr Jane Francis Omlor (*Villas*)
- 23 - Sr Rozanne Swope (*Elizabeth Schaefer Apts.*)
- 24 - Phyllis Banks (*St. Francis Home*)
- 27 - Doug Holm (*Villas*)
- 29 - Viola Ink (*Elizabeth Schaefer Apts.*)
- 31 - Barbara Borer (*St. Francis Home*)



Don't forget to visit and "like" the St. Francis Senior Ministries Facebook page. More pictures, announcements and events are posted on our page.



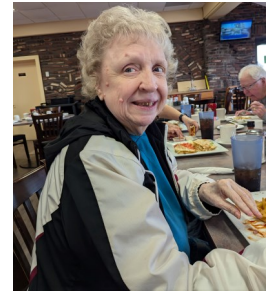
EMAILS WANTED!

Please provide us with your email so we can email you the monthly newsletter and calendar!

You can email Kellie Hartsel at Kellie.Hartsel@stfrancishome.org or call her at (419) 443-1540.

Newsletters are also posted on our website (csjinitiatives.org/tiffin) and on the St. Francis Senior Ministries Facebook Page.

American Table



**JOIN US FOR
COOKIES WITH
SANTA & MRS. CLAUS**

**SUNDAY, DECEMBER 8
1:00 - 3:00 PM**

Meet Santa, Mrs. Claus and the animals living at the Franciscan Earth Literacy Center, 194 St. Francis Ave, Tiffin

This event is FREE and open to the public. All ages welcome to tour the facility. FREE pictures with Santa available.

419-448-7485
www.felctiffin.org

ST. FRANCIS COMMUNITY PRESENTS

MARDI GRAS

Reverse Raffle

LIVE, IN-PERSON

Friday, February 28th 6:00 - 9:00 pm

Elizabeth Schaefer Auditorium
190 St. Francis Ave., Tiffin - St. Francis Campus

Cider & Donuts



Trick or Treat

