



ST. FRANCIS
Senior Ministries

SHARING TIMES

A newsletter for Families and Residents of St. Francis Home, Friedman Village, ESA and Villas

Volume 13, Issue 7 July 2025

RESIDENT RIGHTS

You have the right to ownership and reasonable use of personal property so as to maintain personal dignity and individuality.



In memoriam

We extend our deepest sympathy to the family and friends of our residents who recently passed away.



Bill Wickham

Sandy Maistros

Janice Hoffbauer

Dorothy Davidson

Glenna Tyree

Hazel Benner

18th Annual Summer Harvest Gourmet Gala

Saturday, August 9, 2025 ~ 6:00 p.m.

St. Francis Campus, 200 St. Francis Ave., Tiffin

Garden Party Theme

Suggested Garden Party attire, but not required



Ticket required to attend

\$50 per person
Be entered into an Early Bird Drawing if ticket is purchased before July 1st
scan the QR Code



Gala Chair: Ashley Hoffbauer

\$50 TICKET INCLUDES:

Heavy Appetizers made with Chemical-Free Vegetables grown on the Seeds of Hope Farm provided by local restaurants and universities AND Assorted Desserts

Live Cooking Demonstrations and Wine & Brews from local wineries and breweries

Live Music by Mimi Johnston

50/50, General Raffle, Garden Party Raffle, Live/Silent and Online Auction Items

Gift Card Tree Drawing valued at \$250 (one entry per ticket purchased, additional tickets \$10 each)

Chance to Win \$500 Drawing (one entry per ticket purchased, additional tickets \$10 each)

Don't forget to bid on our online auction items between Aug 1st - 8th. To view auction items and set up an account go to:



<https://www.32auctions.com/FELCGala2025>
or scan the QR Code

Winners of all raffle drawings will be announced at the event, posted on Facebook and contacted by phone.

Deadline to purchase tickets: July 30th
For more information or for tickets, call Mission Advancement Office at 419-447-0435 or visit www.felctiffin.org



All Proceeds to benefit the Franciscan Earth Literacy Center and Seeds of Hope Farm



Congratulations to Jim on his retirement!

EMAILS WANTED!

Please provide us with your email so we can email you the monthly newsletter and calendar!

You can email Kellie Hartsel at Kellie.Hartsel@stfrancishome.org or call her at (419) 443-1540.

Newsletters are also posted on our website (csjinitiatives.org/tiffin) and on the St. Francis Senior Ministries Facebook Page.

Busy Residents

**FUN
TIMES!**



HAPPY BIRTHDAY RESIDENTS OF ST. FRANCIS SENIOR MINISTRIES

July

- 01 - Janet Sartor (*St. Francis Home*)
- 02 - Donna Daniel (*Elizabeth Schaefer Apts.*)
- 03 - John Kirby (*St. Francis Home*)
- 06 - Charlotte Duncan (*St. Francis Home*)
- 08 - George Marsh (*Villas*)
- 18 - Janice Borer (*Villas*)
- 24 - Mickey Ekleberry (*Friedman AL*)
- 24 - Nicholas Yeager (*Villas*)
- 28 - Hazel Poteet (*Elizabeth Schaefer Apts.*)
- 29 - Dorene Harden (*Elizabeth Schaefer Apts.*)



Skilled Nursing Care Week



Don't forget to visit and "like" the St. Francis Senior Ministries Facebook page. More pictures, announcements and events are posted on our page.

Page 3



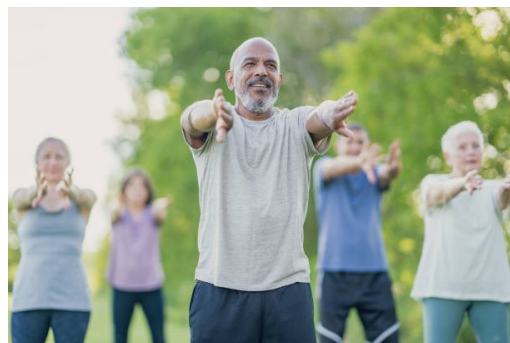
Contemplative Tai Chi for Seniors

St. Francis Convent Chapel
9:00 a.m. every Wednesday

Enter through the front door
of the Convent.

Sister Jane Omlor has been offering
an experience of simplified Tai Chi and invites
you to give it a try.

No charge, 1/2 hour, no experience.





**Senior Day at the Seneca
County Fair**
Tuesday, July 22

**Senior Day at the Attica
Fair**
Wednesday, August 6

THERAPY PROGRAMS

Page 4

Maximizing strength, independence & quality of life

St. Francis Senior Ministries, in partnership with HealthPRO Heritage, offers on-site rehabilitation services:

- Physical Therapy
- Occupational Therapy
- Speech Therapy

Specialized programs are available to promote independence and regain skills:

- Fall Prevention
- Balance
- Mobility
- Training in Self-Care & Home Activities
- Pain Management
- Home Safety
- Post-Operative Care
- Caregiver Training
- Home Safety Assessment
- Adaptive Equipment Training
- Voice and Speech Impairments
- Swallowing Difficulty
- Word-Finding Deficits
- Incontinence Management
- Arthritis Management

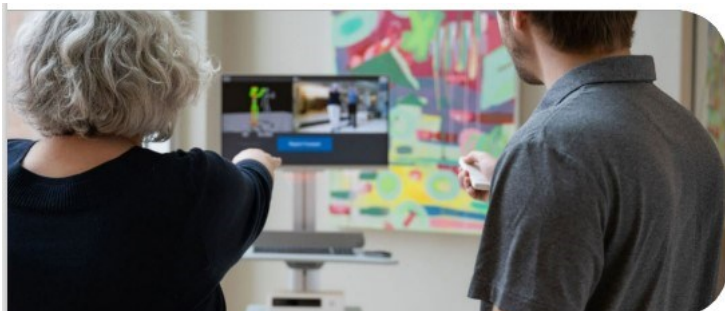
Additional Details:

- Therapy participation requires a physician prescription
- Services are typically covered under Medicare Part B or Managed Part B benefit

For more information or to schedule an appointment or a complimentary consultation, please call 419-447-2723 Ext 3275.



HEALTHPRO  HERITAGE
182 St Francis Ave • Tiffin, OH 44883



FIND OUT YOUR FALL RISK! FREE VIRTUSENSE SCREENING EVENT

Every 4th Wednesday | 11:00AM-12:00PM

Please join us for a balance screening event hosted by HealthPRO Heritage. Utilizing artificial intelligence, VirtuSense analyzes your gait to calculate your exact risk of falls. Come find out your fall risk for **free** + find out just how VirtuSense technology is changing the healthcare industry!

For more information, please call:

Phone Number

419-447-2723 ext. 3275

St. Francis
Therapy Department
182 St. Francis Ave.
Tiffin, OH 44883

Join Our Team!

**ST. FRANCIS
SENIOR
MINISTRIES**

Scan to join the team
or to donate



or visit alz.org/walk

Please make checks payable to:
Alzheimer's Association

**WALK TO END
ALZHEIMER'S**
ALZHEIMER'S ASSOCIATION

WALK TO END ALZHEIMER'S

TIFFIN REGIONAL

Saturday, September 27, 2025

TU/Heminger Center
350 Miami St.
Tiffin, OH

9:00 Check In & Activities

10:00 Opening Ceremony and Walk



**The End of Alzheimer's Starts With
YOU!**

24/7 HELPLINE: 800.272.3900